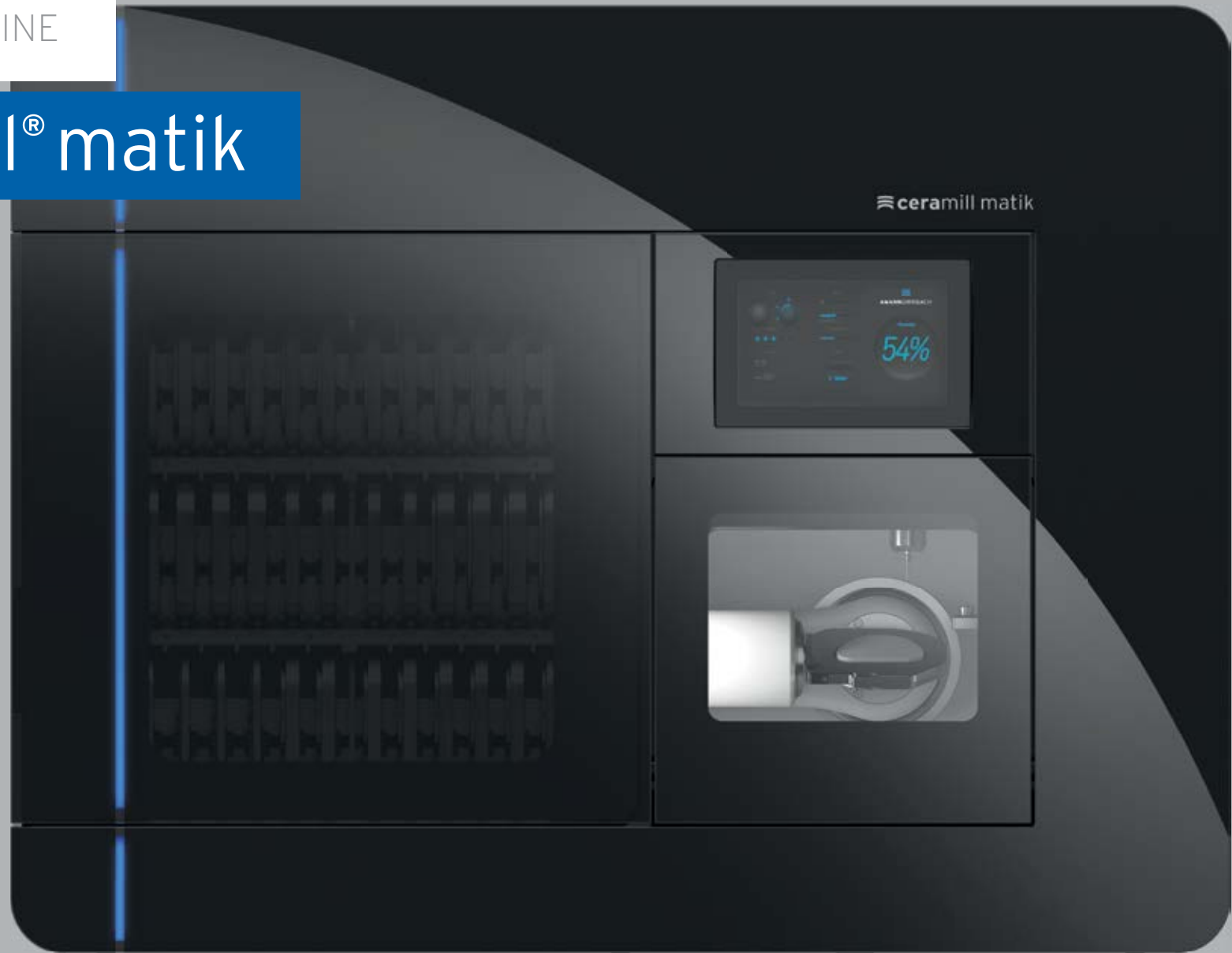


#PRIMETIMEMACHINE

ceramill[®] matik





#PrimeTimeMachine



TIME IS ON YOUR SIDE.

The Ceramill Matik marks the dawn of a new era in in-house fabrication. As an intelligent production solution, it clearly sets itself apart from conventional milling machines with blank changers. The fully integrated fabrication unit offers the laboratory the possibility to design its workflow independently and flexibly. It dramatically reduces the effort and complexity of material and tool management. Automatic maintenance, cleaning as well as changing the operating modes save time and help the technician to focus on the essentials - the dental work itself.

THE BENEFITS COMPARED TO THE INDUSTRY STANDARD - DRAMATIK.



TIME

- _ Automatic material and tool feed
- _ DNA performance processing: carving, thrilling, speed milling
- _ Automatic maintenance and cleaning
- _ Fully automatic tool and material management



MONEY

- _ Highest performance and maximum diversity of materials and indications at the lowest possible investment sum**
- _ Cost savings due to controlled tool wear**
- _ No additional investment and outsourced costs**



CONVENIENCE

- _ Short set-up times due to high material capacity**
- _ Manual cleaning not required**
- _ Autonomous wet/dry change**
- _ Flexible job management even during ongoing operation**
- _ Autonomous multi-shift operation possible without requiring manual intervention**

CERAMILL MATIK. 3 IN 1.

Ceramill Matik opens up a still unique segment within the digital dental world. As the first full service unit, it combines three machines in one. Apart from the actual processing station, the system also performs the functions of a fully automated stock management system as well as a machine cleaning device.

The support in loading, cleaning and in material management allows massive time savings in everyday laboratory routines. Furthermore, additional software tools help to make optimum use of the materials and the tools. Due to RFID*, it does not matter whether the resources to be used are placed inside or outside the system.

Yet another highlight is the newly designed 5X machining station. In development, for example, the main focus was on the maximum diversity of indications and materials. Ceramill Matik therefore offers innovative processing methods such as the patented carving mode (60 % time saving), thrilling (production of one-piece abutments) and speed milling of acrylic materials, as well as the maximum material range from hard and brittle block materials to zirconium and PMMA materials and metal materials.

- _ Maximum time savings in resource management through automatic management of tools and materials**
- _ Highest possible convenience due to autonomous wet and dry change and automatic cleaning**
- _ Full range of applications due to maximum indication and material portfolio**
- _ Future-safe due to constant software development and expandable holder portfolios**



*RFID - Identification by means of electromagnetic waves



10X DNA Control Unit - the control center

10-axis control for activating the mechanics

10" Touchscreen - the operating element

Integrated and intuitive order management

36x Blank tank - the material manager

RFID supported and chaotic* stock management in the blank tank

100k Super high frequency spindle - the power pack

Hybrid bearing, high-performance super high frequency spindle (100,000 rpm)

26x Tool stock - the tool manager

RFID supported, chaotic* tool management with exchangeable tool magazines

5X Processing station - the milling unit

High quality, dynamic and stable 5X system

Industrial zero-point clamping system - the clamping unit

Precise, stable and precisely repeatable zero-point clamping system

Interior HD camera - full view

Camera for remote monitoring of the production process

Ceramill Cleanstream - the automation specialist

Integrated self-cleaning system with chip conveyor, coolant circuit and extraction system

* chaotic = automatic identification and assignment of the tool or material

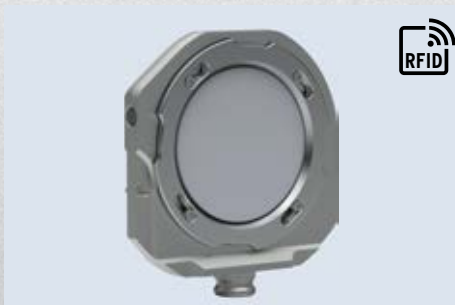
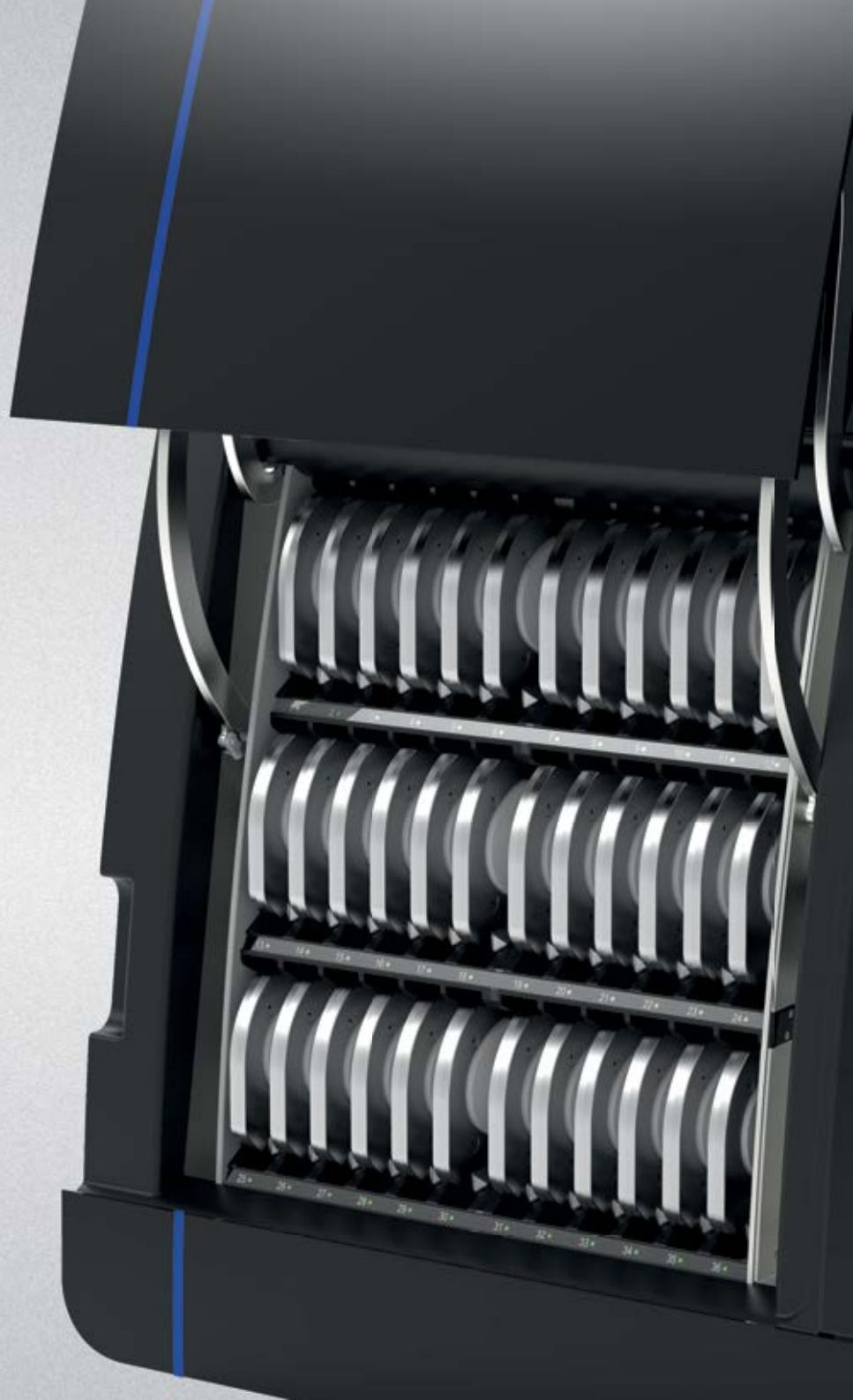
INTEGRATED BLANK TANK = INTEGRATED MATERIAL MANAGEMENT

The Ceramill Matik is a novelty on the market in the field of material management. All materials can already be read in at goods receiving or directly at the system and married to the intelligent holders. An electronically readable RFID chip in the holder allows all relevant material information to be read out at any time both inside and outside the machine. The user always has an overview of the materials used and the handling effort due to the variety of materials, heights and shapes is reduced significantly.

Here the Ceramill Matik offers an unprecedented capacity. Supported by autonomous changing and cleaning processes, process-safe milling processes overnight or at weekends no longer represent a problem.

In addition, finished jobs can be conveniently removed from the blank tank during the milling process. The user is informed of the current job status via colored LEDs on the slot.

- _ High time savings due to elimination of loading processes and direct access to all materials**
- _ Transparent material management and process safety through intelligent material holders and pick-by light system**
- _ Maximum storage capacity for overnight and weekend production**



Intelligent holders with industrial zero-point clamping system and integrated RFID chip



Maximum material and indication spectrum due to exchangeable holders

INTELLIGENT TOOL MANAGEMENT FOR AN ORGANIZED PORTFOLIO

Ceramill Matik finally solves one of the last major problems in dental CAD/CAM manufacturing - the tool management. Never again do milling cutters have to be disposed of almost unused, because the material to which they belong and the current service life are unknown. Never again do tools have to be assigned manually in the software to ensure process safety.

The innovative Tool Management Solution brings intelligence to tool management - patent-pending. Together the milling cutter and the packaging form a unit that can be used directly, conveniently and without a defined location (chaotic) in the tool tray. Through the integration of a contactless readable RFID chip in the packaging, the tool data is read by the machine and the current status is stored on the tool unit after each operation.

Same as in clean room technology, the intelligent tools on the exchangeable tool trays are protected by overpressure in the tool storage compartment. This ensures added process safety during production.



Active dust-free storage in the machine due to clean room technology

- _ Time savings in management due to digitally readable and material-specific color-coded tools
- _ Cost savings due to controlled tool wear
- _ Automatic tool identification and a tool storage compartment in the milling chamber protected by overpressure ensure maximum process safety



Convenient tool trays with 26 tool slots each for easy loading and changing



Intelligent tools with material-specific color-coding

CLEANING IS THE KEY TO AUTOMATION

Only a completely thought-out cleaning concept can ensure sustained and efficient production. This is why the Ceramill Matik was designed from scratch to meet this requirement.

A durable special coating, lateral irrigation bars, 360° irrigation via the spindle rim and an overpressure chamber to protect the tools help to keep the milling station permanently clean. Supported by two powerful industrial pumps in the Ceramill Cleanstream with a total irrigation capacity of around 40 liters per minute, the milling chamber is irrigated autonomously and thoroughly. An automatic change process between the machining processes ensures significant time savings in handling and maximum production capacity without requiring any intervention.

The chip conveyor integrated in the Ceramill Cleanstream enables easy disposal of the chips and maximum capacity during continuous operation of the system by separating the solid particles in the irrigation medium.

- _ **Autonomous production and high time savings through automatic cleaning**
- _ **Maximum production capacity and automatic wet/dry change due to self-cleaning of the milling chamber**
- _ **Convenient waste disposal through waste separation in the chip conveyor**



Automatic waste separation in the chip conveyor



Cleaning-friendly design of the milling chamber and resistant water-repellent coating

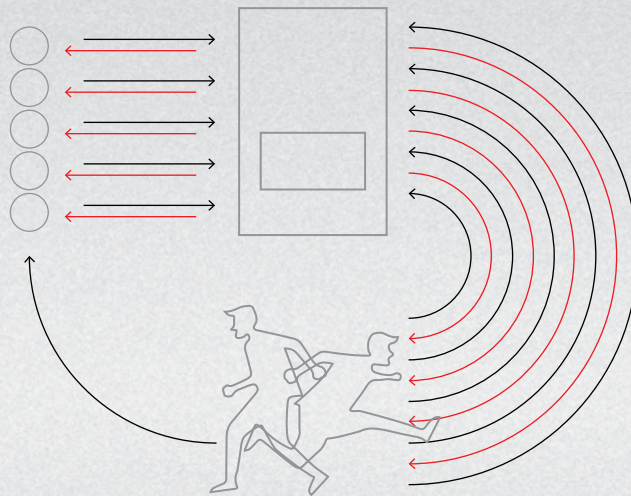


360° cleaning of the interior space

#PRIMETIME - WITH A FULL FOCUS ON THE ESSENTIALS.

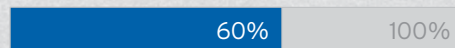
The Ceramill Matik supports everyday laboratory routines with the complex administration of tools, materials and jobs, so that the user can focus on value-creating activities. As a result, the dental technician regains his/her role as the pacesetter in the digital manufacturing process - not the machine.

LABORATORY WORKFLOW

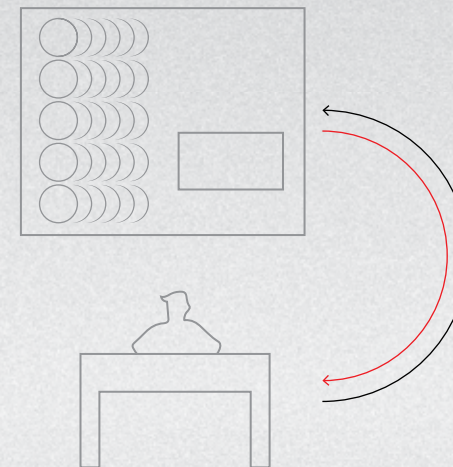


CONVENTIONAL CAD/CAM MACHINE

Productive working time:



Material changes, tool changes, cleaning processes and inventory management dictate the everyday routine of the dental technician.



CERAMILL MATIK

Productive working time:



Full focus on the value-creating activities.

ONE SOLUTION FOR ALL LABORATORY SIZES

SMALL LABORATORY

**All necessary resources
in a single system**



MEDIUM-SIZED LABORATORY

**Most frequently used
resources in a single
system**



New or additional materials
already registered at the
holders



LARGE LABORATORY

**Most frequently used
resources in several
systems**



New or additional materials
already registered at the
holders



TRANSPARENT RESOURCE MANAGEMENT IN THE LABORATORY

THE RIGHT SOLUTION FOR EVERYONE.

PRODUCTION UNITS



ceramill® mikro



- MILLING



ceramill® mikro ic



- MILLING
- GRINDING
- CARVING
- THRILLING



ceramill® motion 2



- MILLING
- GRINDING
- CARVING
- THRILLING

FULL SERVICE UNIT

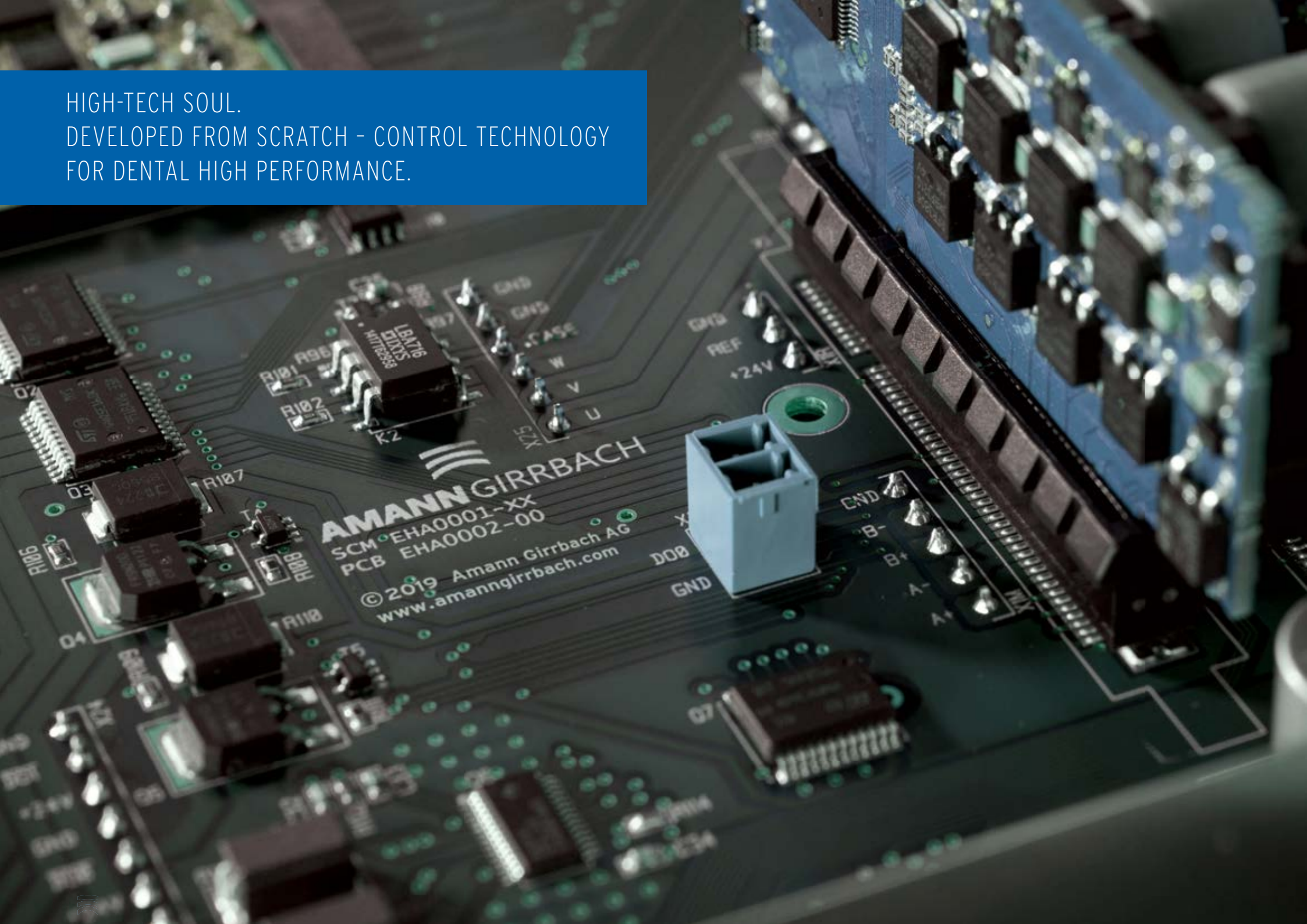


ceramill® matik



- MILLING
- GRINDING
- CARVING
- THRILLING
- AUTOMATION
- STOCK MANAGEMENT

HIGH-TECH SOUL.
DEVELOPED FROM SCRATCH - CONTROL TECHNOLOGY
FOR DENTAL HIGH PERFORMANCE.

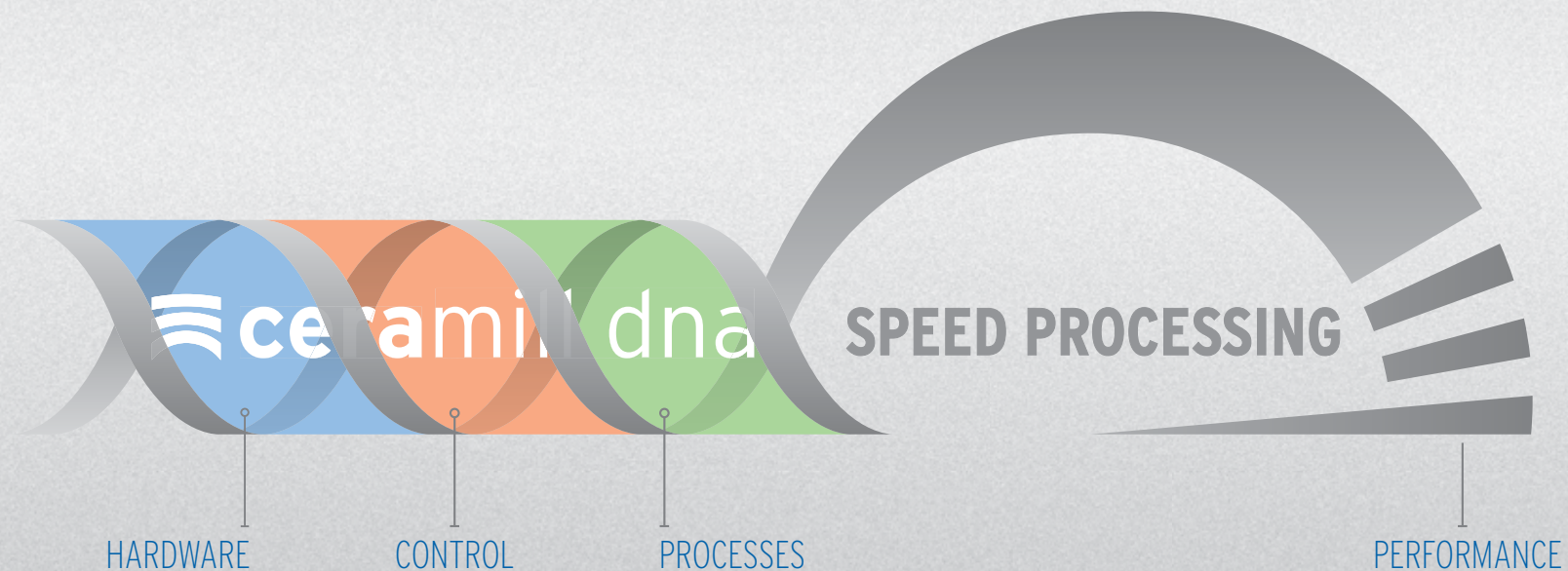


HARD AND SOFTWARE FROM A SINGLE SOURCE. PERFECTLY MATCHED.

Dental workflows require the right hardware. To reflect the variety of software innovations and the complexity of the newly developed design functions of the Ceramill system simply and intuitively in the fabrication process, the Ceramill Matik makes the hardware one of the cornerstones. Digital management via RFID reduces complexity in resource management. Autonomous cleaning and automatic change processes enable multi-stage fabrication processes of digitally created restorations - without human intervention (e.g. in the area of removable and fixed dentures).

Furthermore, the Full Service Unit Ceramill Matik opens up a multitude of possibilities for additional service functions. The in-house developed control system in conjunction with the integrated operating system and the HD camera enable full access with mobile devices in the future from anywhere in the world. In addition, this combination provides quick and easy support in advising users, when ordering or meeting service needs.

The newly created intelligence in material and tool management, the precise and performance-oriented milling unit and the flexible holder concept create the successful basis for effective fabrication, service and laboratory processes with the Ceramill Matik. A system for the future.



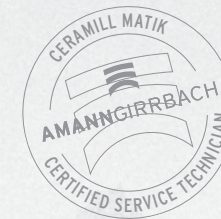
ALL-ROUND SUPPORT ON-SITE

From shipment and installation to maintenance and repairs on-site - with the Ceramill Matik Amann Girrbach sets yet another standard in full service. The Ceramill Matik is set up and commissioned directly in the laboratory worldwide with the help of our logistics partners and the Ceramill Field Service. Servicing over the entire life cycle of the unit is also provided directly on-site - without the need for returning the system!



DIRECT SHIPMENT AND INSTALLATION

Direct shipment and installation at the intended location.



AMANN GIRRBACH CERAMILL FIELD SERVICE

Worldwide maintenance and services directly on-site.

SHEER ENDLESS POSSIBILITIES.

INDICATIONS	
Crown/bridge full contour/contour reduced	<input type="radio"/>
Inlay/Onlay	<input type="radio"/>
Veneer	<input type="radio"/>
Overpress full contour	<input type="radio"/>
Telescopes	<input type="radio"/>
Sliding element	<input type="radio"/>
One-/multi-part block abutments	<input type="radio"/>
Titanium abutment individual	<input type="radio"/>
Bridge on conical titanium bases	<input type="radio"/>
Multi-pontic screw-retained construction on Ti bases	<input type="radio"/>
Bar on titanium bases	<input type="radio"/>
Bite splints	<input type="radio"/>
Eggshell temporaries	<input type="radio"/>
Partial/full dentures	<input type="radio"/>
Digital model creation	<input type="radio"/>



TECHNICAL DATA



	ceramill® matik
Dimensions D/W/H (mm)	780x1,265x1015
Weight empty/max. (kg)	310/365
Power rating	100-230 V 50/60 Hz
Output (W)	750
Speed (rpm)	100,000
Torque spindle (Ncm)	11.2
Collet (Ø mm)	3
Controlled axes	9
Type of drive	Intelligent Closed Loop



	ceramill® cleanstream
Dimensions D/W/H (mm)	780x1,265x985
Weight empty/max. (kg)	210/260
Power rating	100-230V 50/60 Hz
Output (W)	300
Coolant tank (l)	50
Extraction	prepared

ORDERING INFORMATION

Machines

181200	Ceramill Matik
178660	Ceramill Cleanstream
178600	Ceramill Airstream

Accessories

181201	Tool Tray Production
181210	Blank Holder 71 Production
181211	Blank Holder 98 Production
181212	Blank Holder Blocks AG Production
181213	Blank Holder Blocks UN Production
181214	Blank Holder Ti-Preforms Production
181215	Blank Holder XL Production
181216	Blank Holder D-Set Production
181217	Blank Holder Baltic Denture Production
181218	Blank Holder Metal Production

Tools

760660	Roto RFID 2.5 ZI	gray
760661	Roto RFID 1.0 ZI	gray
760662	Roto RFID 0.6 ZI	gray
760663	Roto RFID 0.3 ZI	gray
760664	Roto RFID 2.5 Sintron	blue
760665	Roto RFID 1.0 Sintron	blue
760666	Roto RFID 0.6 Sintron	blue
760667	Roto RFID 0.3 Sintron	blue
760668	Roto RFID 2.5 PMMA/Wax	green
760669	Roto RFID 1.0 PMMA/Wax	green
760670	Roto RFID 0.6 PMMA/Wax	green
760671	Roto RFID 0.3 PMMA/Wax	green
760672	Roto RFID 2.0 Ti	black
760673	Roto RFID 1.0 Ti	black
760676	Diamond RFID 1.8	orange
760677	Diamond RFID 1.4	orange
760678	Diamond RFID 1.0	orange
760679	Diamond RFID 0.6	orange
760680	Roto RFID 2.5 SC	yellow
760681	Roto RFID 1.0 SC	yellow
760682	Roto RFID 0.6 SC	yellow
760683	Roto RFID 0.3 SC	yellow
760684	Roto RFID 2.5 DMB DC	white
760685	Roto RFID 1.0 DMB DC	white
760686	Roto RFID 0.6 DMB DC	white
760687	Roto RFID 0.3 DMB DC	white
760688	Roto RFID 2.5 COCR	brown
760689	Roto RFID 1.0 COCR	brown
760690	Roto RFID 0.6 COCR	brown
760691	Roto RFID 0.3 COCR	brown
760692	Roto RFID 2.5 PMMA Denture	pink
760693	Roto RFID 1.5 PMMA Denture	pink
760694	Roto RFID 1.2 Drill	green
760695	Roto RFID 1.0 Wax Denture	red
760696	Roto RFID 3.0 Wax Denture	red
760697	Roto RFID 2.5 Model	red
760698	Roto RFID 2.0 Model	red



#PrimeTimeMachine

AUSTRIA (HEADQUARTERS)

Amann Girrbach AG
Koblach, Austria
Fon +43 5523 62333-105
austria@amanngirrbach.com

GERMANY

Amann Girrbach GmbH
Pforzheim, Germany
Fon +49 7231 957-100
germany@amanngirrbach.com

NORTH AMERICA

Amann Girrbach North America, LP
Charlotte, NC, U.S.A.
Fon +1 704 837 1404
america@amanngirrbach.com

BRASIL

Amann Girrbach Brasil LTDA
Curitiba, Brasil
Fon +55 41 3287 0897
brazil@amanngirrbach.com

ASIA

Amann Girrbach Asia PTE LTD.
Singapore, Asia
Fon +65 6592 5190
singapore@amanngirrbach.com

CHINA

Amann Girrbach China Co., Ltd.
Beijing, China
Fon +86 10 8886 6064
china@amanngirrbach.com